

NORTHFIELD
Revealed

A Cottage Home



This painting, in the Birmingham Museums Trust collection, is called Sket's Cottage Northfield, Birmingham. It was painted between 1875-1900 by artist T Kendrick <http://dams.birminghammuseums.org.uk/asset-bank/action/viewAsset?id=8880&index=1&total=4&view=viewSearchItem>





Can you see a scene like this in Northfield today? If not, what is different?

1

Can you guess what this is?
How might it work?

2

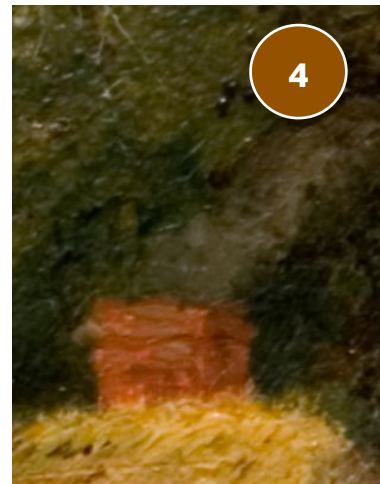
Who might these people be?
Can you describe what they are wearing?

3

What is this roof made from?
What clues tell you whether it is in good condition or not?

4

How many fireplaces does the cottage have (look at the big picture too)? The fires were for keeping warm - and what else?



1. This is probably a bird scarer, powered by wind
2. We think this is Sket's wife and baby
3. Thatch. It has plants growing on it and green patches which might mean it is damp and therefore not in the best condition.
4. 2 chimneys = 2 fireplaces. Fires were used for cooking, drying clothes and even for extra light in the evenings. Lighting the fire was always the first job every day.

Answers